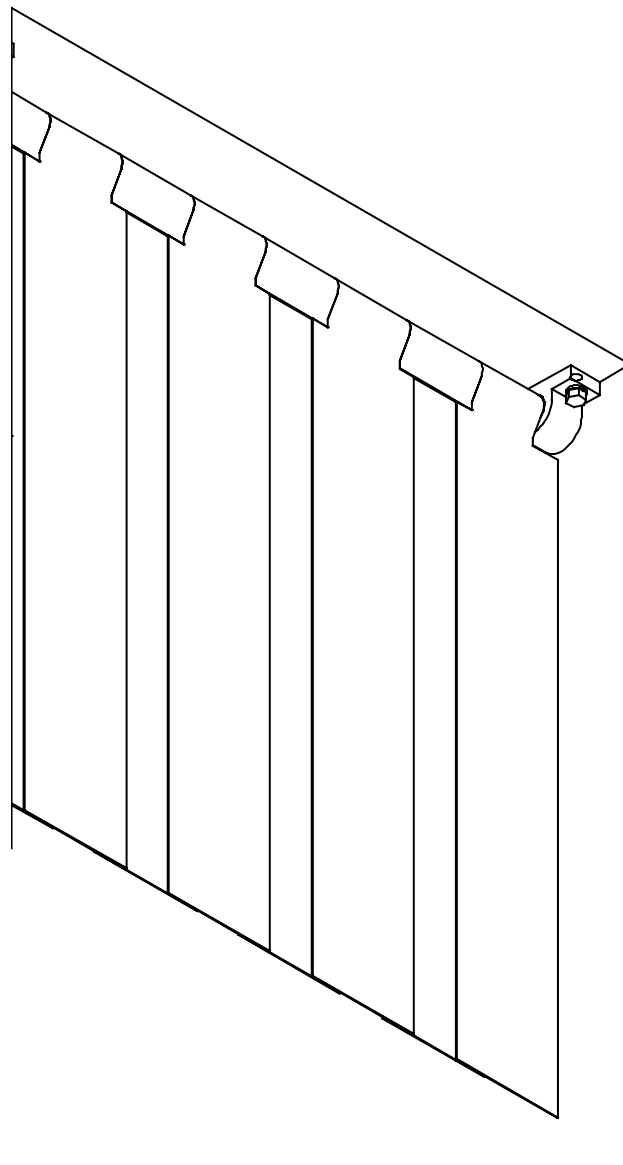


Series 9010-6 – Super Swing Strip Curtain

INSTALLATION INSTRUCTIONS

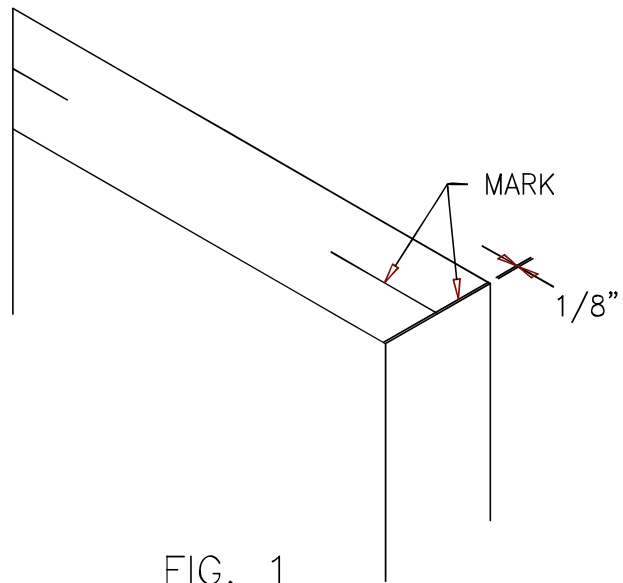
READ ALL INSTRUCTIONS BEFORE INSTALLING CURTAIN. SUPER SEAL MFG. LTD. WILL NOT BE HELD RESPONSIBLE FOR IMPROPER INSTALLATION OF ANCHORING DEVICES, OR FOR INSTALLATION INTO AGED OR UNSOUND CONCRETE, CONCRETE BLOCK, OR OTHER WALL OR FLOOR MATERIAL WHICH MAY RESULT IN PREMATURE PRODUCT WEAR, PRODUCT FAILURE, PROPERTY DAMAGE, OR PERSONAL INJURY.



Note: Before Installation see hardware list at back of this manual (page 4).

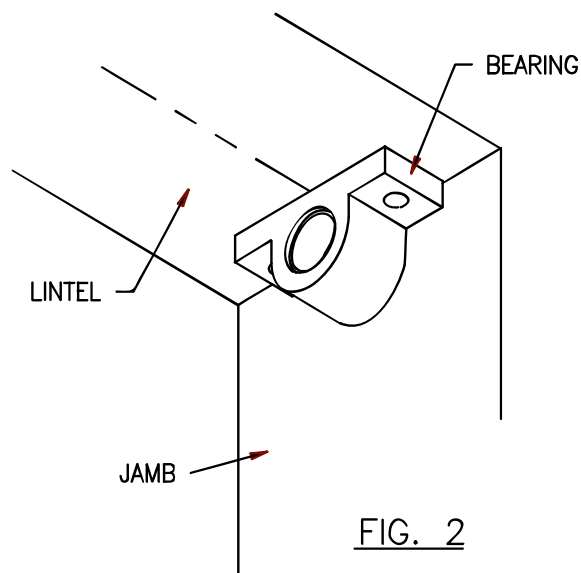
1. Mark Lintel

- o Make a center mark on the lintel at both corners for the mounting of bearings, and a line parallel to the jamb at 1/8" from the jamb (Fig. 1).



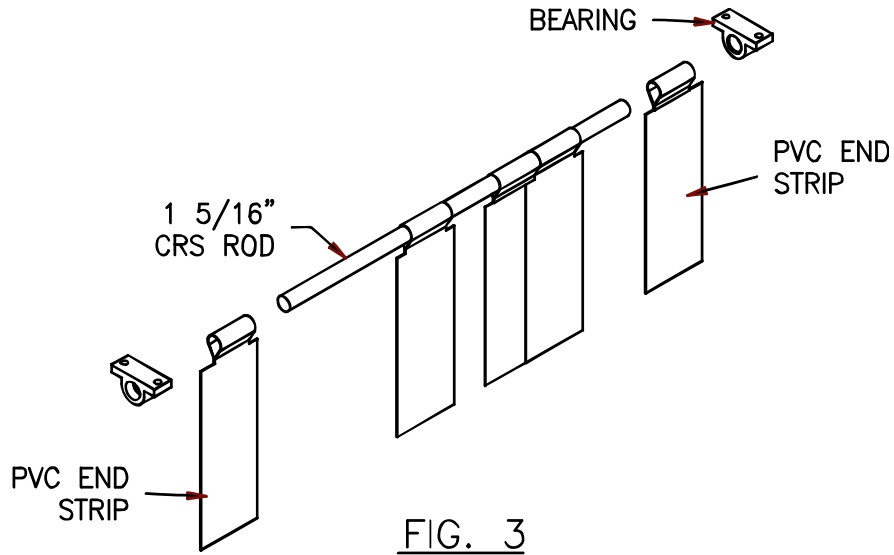
2. Drill Holes For Bearing

- a. Place Bearing against lintel. Center it along center line and keep outer edge of bearing lined up with line parallel to jamb (Fig. 2)
- b. Using bearing as a template, mark hole locations.
- c. Remove bearing and drill holes through lintel using 27/64" drill bit.
- d. Tap holes with 1/2"-13unc threading tool.



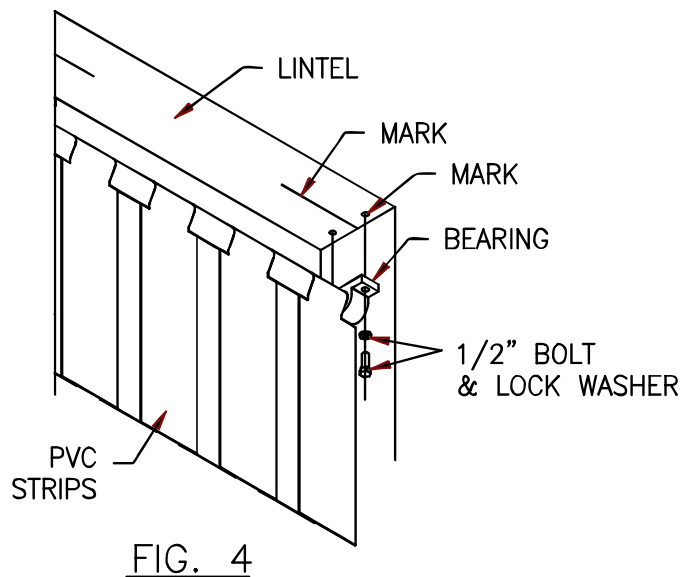
3. Assemble PVC Strips Onto Steel Rod.

- o Slide PVC strips over rod so that end strips are on the outsides and bearings are on each end (Fig. 3).



4. Attach PVC Strip Curtain Assembly To Lintel.

- a. Lift curtain assembly up to lintel so that holes on bearings line up with holes on lintel.
- b. Fasten bearings to lintels using 1/2"-13unc x 1 1/2" hex bolts along with 1/2" lock washers. Use 3/4" socket driver bit to tighten bolts (Fig. 4).



The Following Lists Cover Basic Installation, Not Including Options.

Components List (Per Assembly)

No.	Description	Qty.
1	1 5/16" CRS Rod	1
2	PVC Strips	*

*Quantities dependent on customer specifications

Hardware List (Per Assembly)

No.	Description	Qty.
1	4500 90deg. Bearing Total	2
2	1/2" B.S. Lock Washer-Zinc	4
3	1/2" (13) X 1 1/2" Hex Bolt-Zinc	4

*Quantities dependent on customer specifications

Recommended Tools

No.	Description	Qty.
1	Tape Measure	1
2	Plumb line or Level	1
3	Pencil or Marker	1
4	Square	1
5	Power Drill	1
6	27/64" Drill Bit	1
9	1/2"-13unc Tap	1
10	3/4" Socket Driver Bit	1